

Project Name: Silverton Paideia School

GBBN Project No: 11677.03

Date: October 20, 2008

Present: see attached sign-in sheet

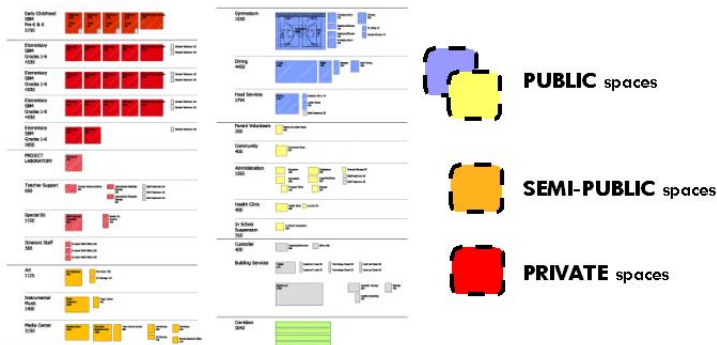
Notes By: Scott Vidourek

Distribution: GBBN Team, SPT, file

Please bring errors or omissions to the writer's attention for correction.

**SILVERTON PAIDEIA ELEMENTARY UPDATE**

- Reviewed CPS 400 student program in graphical format
- Attached is the POR (Program of Requirements) for Silverton Paideia. The POR is a summary of spaces (square footage requirements) for the spaces shown in the graphical format. (see attached)
- Master Plan to include Black Box and (4) additional classrooms.
- End User Space Function(s) comments were updated to include comments / discussion from 9.29.2008 SPT meeting in which Museum Concept was the topic of discussion (see attached)



**PROGRAM COMMENTS:**

- (3) Autistic classes currently, (1) primary and (2) intermediate. Possible to enclose and ELA to provide for the requirement.
- Instrumental Teacher needs space to teach independent of Music.
- Pre K and K classrooms are larger than the elementary classrooms and have additional furniture. Toilet in located in the room as well.

#### **SUMMARY from 09.29.2008 SPT meeting**

- Focused on the integration of the Museum Concept into the program
- Discussion revolved around the FLEXIBILITY of the spaces and how they can adapt to the Museum Concept
- How, Where display of "partnership" items are located. Program/budget does not allow throughout, so identify key locations such as Entry, ELAs and classrooms to incorporate display. Could be integrated into the corridors using a hanging system (rails) as well.
- Collection (gallery) would require humidity/temp control (68/68), lighting control, security and insurance concerns.
- Video conference should be flexible / portable to allow to take place in multiple location and provide opportunity for Virtual Field Trips.

#### **MARK WENDLING, CITY MANAGER**

- CPS and City of Silverton working through the legal issues of the land transfer. CPS Board to vote on revision to contract.

#### **ADDITIONAL INFORMATION**

- Provide list of "non-negotiable" items for discussion(s). Provided for reference is the OSFC Design Manual regarding Classroom requirements, which is the basis of design. (see attached)
- Examples of ELA / Classroom layouts from previous schools to show how the "pod" arrangement were broken down.

#### **NEXT MEETING(s)**

- To be schedule after the School Site has been determines by CPS and City of Silverton
- Next meeting will focus on Site Design
- SHADOW DAY (gbbn) at Silverton Elementary prior to next SPT meeting
- Preference to have SPT meeting at Silverton Elementary school to integrate process with other students, space needs to be suitable for adults.

No.	POR	Space	End User	Comment
<b>ACADEMIC CORE SPACES</b>				
	<b>AC</b>	ELEMENTARY classroom	FACULTY	create spaces for museum school concept and object based learning
	<b>AC</b>	ELEMENTARY classroom	STUDENTS	furniture (desk) proportional size for object based learning
	<b>AC</b>	ELEMENTARY classroom	FACULTY	spaces must be FLEXIBLE for group learning
	<b>AC</b>	ELA extended learning area	FACULTY	more small group instruction. Create "learning centers"
museum	-	-	COMMUNITY PARTNERS (school hours)	interactive learning spaces, similar to ART WORLD at the Cincinnati Art Museum
	<b>AC</b>	ELEMENTARY classroom	COMMUNITY PARTNERS (after school)	(6) classrooms open after hours, programs rotate between rooms (tutoring, homework, mentoring) ends at 6pm (could extend to 8pm)
	<b>AC</b>	ELA extended learning area	FACULTY	outdoor learning areas for teachers
	<b>AC</b>	ELEMENTARY classroom	FACULTY	project based learning
	<b>AC</b>	ELEMENTARY classroom	FACULTY	natural lighting
	-	-	-	

## ADMINISTRATIVE SPACES

<b>AD</b>	CONFERENCE	FACULTY	<p>8-12 (advocates + faculty) people could be schedule for student intervention. Parents sign-in, then proceed to conference area</p> <p>good student entrance (easy to find) for health clinic, separated from other spaces. Create a welcoming / inviting atmosphere</p> <p>waiting area needs to be ample, considering students awaiting pick-up, or appointments w/ principal (am/pm)</p> <p>checks mail 2-3 times a day.</p> <p>parking near front door</p> <p>good lighting</p> <p>adjacent parking</p> <p>outside waiting area with benches</p> <p>space to hang coats</p> <p>health clinic needs to be flexible, close for parents (public entrance?)</p> <p>social worker spaces adjacent to students</p> <p>storage for deliverables, and some lockable storage (paper)</p> <p>speech is a FULL time position</p> <p>in-school suspension needs to be located in a "quiet" area, away from other students and administration</p> <p>display area for student work</p> <p>community room adjacent to parent volunteer</p> <p>exhibit space to emphasize museum concept school, with display cases.</p> <p>history of silvertown, possible mosaic. Imagery / object display (360 degrees) of "loan" object presented at entry.</p> <p>during school access to security for sign-in.</p> <p>intinerant offices become the "nerve center", needs to be centralized</p>
<b>AD</b>	RECEPTION	PARENTS	
<b>AD</b>	RECEPTION	STUDENTS	
<b>AD</b>	MAIL_WORK_COPY	FACULTY	
<b>AD</b>	RECEPTION	VISITOR	
<b>AD</b>	-	FACULTY	
<b>AD</b>	-	FACULTY	
<b>AD</b>	RECEPTION	FACULTY	
<b>AD</b>	MAIL_WORK_COPY	STAFF	
<b>AD</b>	HEALTH CLINIC	STAFF	
<b>AD</b>	ITINERANT office	STAFF	
<b>AD</b>	STORAGE	STAFF	
<b>AD</b>	ITINERANT office	STAFF	
<b>AD</b>	IN-SCHOOL suspension	STUDENTS	
<b>AD</b>	RECEPTION	STUDENTS	
<b>AD</b>	COMMUNITY room	PARENTS	
<b>AD</b>	OTHER	PARENTS	
<b>AD</b>	OTHER	PARENTS	
<b>AD</b>	RECEPTION	COMMUNITY PARTNERS (school hours)	
<b>AD</b>	ITINERANT office	COMMUNITY PARTNERS (school hours)	
-	-	-	

## MEDIA CENTER

<b>MC</b>	COMPUTER lab	FACULTY	K-6 grant for 2008-09 school year for computers and tech. Specialist. Computers will be purchase (additional to new program)
<b>MC</b> <b>MC</b>	A/V storage CONFERENCE room	FACULTY COMMUNITY PARTNERS (school hours)	VH1 grant program Video conference portable / flexible, allowing other spaces to become video conference areas (community room). Virtual field trips (1 classroom at a time).
<b>MC</b>	READING room	VISITOR	librray as PUBLIC ammenity, open to public as part of the community center
-	-	-	

## VISUAL ARTS

<b>VA</b>	ART	FACULTY	need kids storage areas (coats/books), since last class will dismiss directly from art/music
<b>VA</b> <b>VA</b>	ART ART	FACULTY FACULTY	flexible mural area for class projects gallery space for each grade (coach based projects).. Ex: "6th grade gallery". Should contain display areas with accent lighting, precedent spaces have included tables hung from ceiling.
<b>VA</b>	ART	FACULTY	museum gallery with great lighting able to display; 3D objects, paintings and ceramics. Display cases.
museum	<b>VA</b>	ART	COMMUNITY PARTNERS (school hours)
-	-	-	flexible hanging system (ex: rail), with low voltage lighting

## MUSIC SPACES

<b>MC</b>	MUSIC	FACULTY	storage too small, needs to accommodate instrument storage.
<b>MC</b>	MUSIC	COMMUNITY PARTNERS (after school)	access for community partners (ymca) after hours.

**PHYSICAL EDUCATION SPACES**

	<b>PE</b>	GYMNASIUM	COMMUNITY PARTNERS (after school)	Community Programs equipment storage needs; gymnastics. Need to verify existing equipment for code.
	<b>PE</b>	GYMNASIUM	COMMUNITY PARTNERS (after school)	offices @ gym; tutor coordinator. Coordinator after-school programs
	<b>PE</b>	GYMNASIUM	SAFETY OFFICIALS	Need emergency area identified, needs to be void of windows, could possible be the gym or corridor space.
	<b>PE</b>	GYMNASIUM	COMMUNITY PARTNERS (after school)	gym wants to be regulation size (high-school) for adult after school (community) activates, w/ 10' baseline. (84'+10'+10'=104' length)
	<b>PE</b>	GYMNASIUM	FACULTY	Special relationship between; gymnasium / music / art, (3) classes coming AND going.
	<b>PE</b>	GYMNASIUM	COMMUNITY PARTNERS (after school)	incorporation of suspended running/walking track at gym
	-	-	-	

**STUDENT DINING SPACES**

	<b>SD</b>	STAFF dining	FACULTY	teacher lunch area centralized, common meeting area for teachers
	-	-	-	

**BUILDING SERVICE SPACES**

museum	<b>BS</b>	STORAGE	COMMUNITY PARTNERS (school hours)	exhibition furniture (cases, etc) requires additional storage, beyond the CPS program
	<b>BS</b>	STORAGE	COMMUNITY PARTNERS (after school)	storage for community programs
	-	-	-	
	-	-	-	

## SITE FEATURES

		FACULTY	
		COMMUNITY PARTNERS (school hours)	9 buses + 3-4 short buses = vans
SUSTAINABILITY		COMMUNITY PARTNERS (after school)	outdoor amphitheater
			greenspace / green roof integrated with science program
SUSTAINABILITY		-	rainwater collection, integrate scupper detail
		-	

## ADDITIONAL NOTES

			lighting in public areas should not be all fluorescence.
museum	DISPLAY AREAS	COMMUNITY PARTNERS (school hours)	need for ceiling hung items (moblies, etc) which are a 360 degree display (walkaround). System needs to be adjustable, flexible and invisible
		-	
museum	GALLERY / COLLECTION	COMMUNITY PARTNERS (school hours)	school as "CENTER" of the community collection area would require; climate control (68/68), security, insurance and light control.
		-	intill / inspire appreciation in studtends of the museum concept
	BLACK BOX THEATRE	COMMUNITY PARTNERS (school hours)	traveling theatre troops, would allow for all school performance
		-	
		-	

## LEGEND

<b>AC</b>	ACADEMIC CORE SPACES
<b>SE</b>	SPECIAL EDUCATION
<b>AD</b>	ADMINISTRATIVE
<b>MC</b>	MEDIA CENTER
<b>VA</b>	VISUAL ARTS
<b>MU</b>	MUSIC
<b>PE</b>	PHYSICAL EDUCATION
<b>SD</b>	STUDENT DINING
<b>FS</b>	FOOD SERVICE
<b>CU</b>	CUSTODIAL
<b>BS</b>	BUILDING SERVICE

**WORKSHEET**

Grade Configuration:				Area	
<b>Student Capacity</b>		<b>K-8</b>			
Enter number of Elementary School students		276			
Enter number of Middle School students		124			
Total Student Capacity		<b>400</b>			
<b>SF per student</b>					
SF per Elementary School student		136	37,638		
SF per Middle School student		165	20,427		
<b>Total Gross Square Feet Funded</b>			<b>58,065</b>		
<b>SELECT ONE</b> <input type="radio"/> Single Story Building <input checked="" type="radio"/> Multistory Building				See Note 1.	
Plus Vertical Circulation (for Multistory Buildings) Area Allowable			0		
<b>Total Adjusted POR Gross Square Footage</b>			<b>58,065</b>		
Program Area		New SF	Existing SF	TOTAL SF	VAR SF
C-AC	Academic Core Spaces	0	0	0	(23940)
C-SE	Special Education Spaces	0	0	0	(1150)
C-AD	Administrative Spaces	0	0	0	(2850)
C-MC	Media Center Spaces	0	0	0	(3150)
C-VA	Visual Arts Spaces	0	0	0	(1125)
C-MU	Music Spaces	0	0	0	(1400)
C-PE	Physical Education Spaces	0	0	0	(7250)
C-SD	Student Dining Spaces	0	0	0	(4450)
C-FCS	Family and Consumer Science Spaces	0	0	0	
C-TE	Technology Education Spaces	0	0	0	
C-FS	Food Service Spaces	0	0	0	(1794)
C-CU	Custodial Spaces	0	0	0	(400)
<b>Facility Subtotal:</b>		<b>0</b>	<b>0</b>	<b>0</b>	<b>(47509)</b>
C-BS	Building Services	0	0	0	(10637)
<b>Facility Total:</b>		<b>0</b>	<b>0</b>	<b>0</b>	<b>(58146)</b>
Construction Factor (11% multiplied by the facility total)		0.10	0.10	0.10	0.10
<b>Gross Square Feet Developed:</b>		<b>0</b>	<b>0</b>	<b>0</b>	<b>(63,960)</b>
Difference of SF developed from SF allowable		<b>58,065</b>			

The Existing SF column is only used in projects where there are building additions.

SPECIAL NOTE: Individual spaces are taken from the space plates which are located throughout Chapters 3, 4, and 5.

Please see these particular chapters for specific requirements for each space.

Note 1: Vertical Circulation (Multistory Buildings) cannot be selected unless written approval is given by the CM and OSFC.

It refers only to the following: Stairways/stairtowers, monumental stairs, elevators and elevator equipment room.

The total size of the Vertical Circulation is equal to the sum of the program areas, excluding building services, multiplied by 2.5%.

**ACADEMIC CORE SPACES**

**C-AC**

CHAPTER 2: BRACKETING

**400 Student POR**

Space		Qty	SF	Area	Variance
E-AC-1	Pre-K/Kindergarten Classroom	4	1,080	4,320	(4,320)
E-AC-2	Pre-K/Kindergarten Restroom	4	50	200	(200)
E-AC-3	Elementary Classroom	10	900	9,000	(9,000)
E-AC-4	Teacher Prep Area/Workroom	0	300	0	0
E-AC-5	Individual Restroom	7	50	350	(350)
E-AC-6	Instructional Material Storage	1	100	100	(100)
E-AC-7	Extended Learning Area	4	1,230	4,920	(4,920)
M-AC-1	Middle School Classroom	4	900	3,600	(3,600)
M-AC-2	Project Laboratory	1	900	900	(900)
M-AC-3	Teacher Prep Area/Workroom	1	300	300	(300)
M-AC-4	Individual Restroom	3	50	150	(150)
M-AC-5	Instructional Material Storage	1	100	100	(100)
<b>Academic Core Total</b>				<b>23,940</b>	<b>(23,940)</b>

**WORKSHEET**

Space		New SF			Existing SF			TOTAL SF		
Qty	SF	Area	Qty	SF	Area	Qty	SF	Area		
0	0	0	0	0	0	0	varies	0		
0	0	0	0	0	0	0	varies	0		
0	0	0	0	0	0	0	varies	0		
0	0	0	0	0	0	0	varies	0		
0	0	0	0	0	0	0	varies	0		
0	0	0	0	0	0	0	varies	0		
0	0	0	0	0	0	0	varies	0		
0	0	0	0	0	0	0	varies	0		
0	0	0	0	0	0	0	varies	0		
0	0	0	0	0	0	0	varies	0		
0	0	0	0	0	0	0	varies	0		
0	0	0	0	0	0	0	varies	0		
<b>Academic Core Total</b>		<b>0</b>			<b>0</b>			<b>0</b>		

**400 Student POR**

Space		Qty	SF	Area
E/M-SE-1	Self-contained Classroom	1	900	900
E/M-SE-2	Workroom/Conference	1	150	150
E/M-SE-3	Restroom/Shower	1	100	100
E/M-SE-4	Special Education/Resource	0	900	0
E/M-SE-5	Small Self-contained Classroom	0	600	0
<b>Special Education Total</b>				<b>1,150</b>

Variance
(900)
(150)
(100)
<b>(1,150)</b>

Space	WORKSHEET			New SF			Existing SF			TOTAL SF		
	Qty	SF	Area	Qty	SF	Area	Qty	SF	Area	Qty	SF	Area
E/M-SE-1	Self-contained Classroom	0	0	0	0	0	0	0	0	0	varies	0
E/M-SE-2	Workroom/Conference	0	0	0	0	0	0	0	0	0	varies	0
E/M-SE-3	Restroom/Shower	0	0	0	0	0	0	0	0	0	varies	0
E/M-SE-4	Special Education/Resource	0	0	0	0	0	0	0	0	0	varies	0
E/M-SE-5	Small Self-contained Classroom	0	0	0	0	0	0	0	0	0	varies	0
<b>Special Education Total</b>				<b>0</b>			<b>0</b>			<b>0</b>		

400 Student POR				
Space	Qty	SF	Area	Variance
E/M-AD-1	1	200	200	(200)
E/M-AD-2	1	200	200	(200)
E/M-AD-3	1	150	150	(150)
E/M-AD-4	0	120	0	0
E/M-AD-5	1	250	250	(250)
E/M-AD-6	1	200	200	(200)
E/M-AD-7	1	150	150	(150)
E/M-AD-8	1	50	50	(50)
E/M-AD-9	1	200	200	(200)
E/M-AD-10	2	50	100	(100)
E/M-AD-11	0	120	0	0
E/M-AD-12	0	110	0	0
E/M-AD-13	0	200	0	0
E/M-AD-14	1	200	200	(200)
E/M-AD-14a	1	400	400	(400)
E/M-AD-15	1	350	350	(350)
E/M-AD-15a	1	50	50	(50)
E/M-AD-15b	1	50	50	(50)
E/M-AD-16	3	100	300	(300)
E/M-AD-17	0	300	0	0
<b>Administrative Total</b>			<b>2,850</b>	<b>(2,850)</b>

WORKSHEET										New SF			Existing SF			TOTAL SF		
Space	Qty	SF	Area	Qty	SF	Area	Qty	SF	Area	Qty	SF	Area						
E/M-AD-1	0	0	0	0	0	0	0	0	0	0	varies	0	See Notes 1, 2					
E/M-AD-2	0	0	0	0	0	0	0	0	0	0	varies	0	See Notes 3,4					
E/M-AD-3	0	0	0	0	0	0	0	0	0	0	varies	0						
E/M-AD-4	0	0	0	0	0	0	0	0	0	0	varies	0						
E/M-AD-5	0	0	0	0	0	0	0	0	0	0	varies	0						
E/M-AD-6	0	0	0	0	0	0	0	0	0	0	varies	0	See Notes 5,6					
E/M-AD-7	0	0	0	0	0	0	0	0	0	0	varies	0	See Note 7					
E/M-AD-8	0	0	0	0	0	0	0	0	0	0	varies	0	See Notes 8,9					
E/M-AD-9	0	0	0	0	0	0	0	0	0	0	varies	0	See Notes 10,11					
E/M-AD-10	0	0	0	0	0	0	0	0	0	0	varies	0						
E/M-AD-11	0	0	0	0	0	0	0	0	0	0	varies	0						
E/M-AD-12	0	0	0	0	0	0	0	0	0	0	varies	0	See Note 12					
E/M-AD-13	0	0	0	0	0	0	0	0	0	0	varies	0	See Note 13					
E/M-AD-14	0	0	0	0	0	0	0	0	0	0	varies	0	See Note 14					
E/M-AD-14a	0	0	0	0	0	0	0	0	0	0	varies	0						
E/M-AD-15	0	0	0	0	0	0	0	0	0	0	varies	0	See Notes 15,16					
E/M-AD-15a	0	0	0	0	0	0	0	0	0	0	varies	0						
E/M-AD-15b	0	0	0	0	0	0	0	0	0	0	varies	0						
E/M-AD-16	0	0	0	0	0	0	0	0	0	0	varies	0						
E/M-AD-17	0	0	0	0	0	0	0	0	0	0	varies	0	See Note 17					
<b>Administrative Total</b>			<b>0</b>			<b>0</b>			<b>0</b>			<b>0</b>						

Refer to Notes on next page

- NOTE 1: Student capacity determines SF allowed. 350-400: 200 SF; 401-550: 300 SF; 551-700: 400 SF (Elem.)
- NOTE 2: Student capacity determines SF allowed. 350-450: 200 SF; 451-600: 300 SF; 601-750: 400 SF (M.S.)
- NOTE 3: Student capacity determines SF allowed. 350-400: 200 SF; 401-550: 300 SF; 551-700: 400 SF (Elem.)
- NOTE 4: Student capacity determines SF allowed. 350-450: 200 SF; 451-600: 300 SF; 601-750: 400 SF (M.S.)
- NOTE 5: Student capacity determines SF allowed. 350-400: 200 SF; 401-550: 250 SF; 551-700: 300 SF (Elem.)
- NOTE 6: Student capacity determines SF allowed. 350-450: 200 SF; 451-600: 250 SF; 601-750: 300 SF (M.S.)
- NOTE 7: Student capacity determines SF allowed. 350-800: 150 SF; 801-1600: 200 SF
- NOTE 8: Student capacity determines SF allowed. 350-400: 50 SF; 401-550: 65 SF; 551-700: 80 SF (Elem.)
- NOTE 9: Student capacity determines SF allowed. 350-450: 50 SF; 451-600: 65 SF; 601-750: 80 SF (M.S.)
- NOTE 10: Student capacity determines SF allowed. 350-400: 200 SF; 401-550: 250 SF; 551-700: 325 SF (Elem.)
- NOTE 11: Student capacity determines SF allowed. 350-450: 200 SF; 451-600: 250 SF; 601-750: 325 SF (M.S.)
- NOTE 12: Student capacity determines SF allowed. 350-800: 100 SF; 801-1600: 200 SF
- NOTE 13: Student capacity determines SF allowed. 350-450: 150 SF; 451-800: 200 SF; 801-1600: 250 SF
- NOTE 14: Student capacity determines SF allowed. 350-450: 200 SF; 451-800: 300 SF; 801-1600: 400 SF
- NOTE 15: Student capacity determines SF allowed. 350-400: 300 SF; 401-550: 350 SF; 551-700: 450 SF; (Elem.)
- NOTE 16: Student capacity determines SF allowed. 350-450: 350 SF; 451-750: 450 SF; (M.S.)
- NOTE 17: Student capacity determines SF allowed. 350-450: 300 SF; 451-800: 400 SF; 801-1200: 500 SF;  
1201-1600: 700 SF

CHAPTER 2: BRACKETING

<b>400 Student POR</b>				<b>Variance</b>	
<b>Space</b>	<b>Qty</b>	<b>SF</b>	<b>Area</b>		
E-MC-1	Reading Room/Circulation	1	1,050	1,050	(1,050)
E-MC-2	Media Specialist Office	1	120	120	(120)
E-MC-3	Workroom/Storage	1	150	150	(150)
E-MC-4	Technology Control Center	1	380	380	(380)
E-MC-5	Computer Lab	1	1,000	1,000	(1,000)
E-MC-6	A/V Storage	1	100	100	(100)
E-MC-7	Conference Room	1	200	200	(200)
M-MC-1	Reading Room/Circulation	1	150	150	(150)
M-MC-2	Media Specialist Office	0	120	0	
M-MC-3	Workroom/Storage	0	250	0	
M-MC-4	Technology Control Center	0	380	0	
M-MC-5	MS Distance Learning Lab	0	1,000	0	
M-MC-6	A/V Storage	0	250	0	
M-MC-7	Conference Room	0	100	0	
M-MC-8	Multimedia Production Room	0	500	0	
<b>Media Center Total</b>			<b>3,150</b>		<b>(3,150)</b>

<b>WORKSHEET</b>			<b>New SF</b>			<b>Existing SF</b>			<b>TOTAL SF</b>		
<b>Space</b>	<b>Qty</b>	<b>SF</b>	<b>Area</b>	<b>Qty</b>	<b>SF</b>	<b>Area</b>	<b>Qty</b>	<b>SF</b>	<b>Area</b>		
E-MC-1	Reading Room/Circulation	0	0	0	0	0	0	varies	0	See Note 1.	
E-MC-2	Media Specialist Office	0	0	0	0	0	0	varies	0		
E-MC-3	Workroom/Storage	0	0	0	0	0	0	varies	0	See Note 2.	
E-MC-4	Technology Control Center	0	0	0	0	0	0	varies	0		
E-MC-5	Computer Lab	0	0	0	0	0	0	varies	0		
E-MC-6	A/V Storage	0	0	0	0	0	0	varies	0	See Note 3.	
E-MC-7	Conference Room	0	0	0	0	0	0	varies	0		
M-MC-1	Reading Room/Circulation	0	0	0	0	0	0	varies	0	See Note 4.	
M-MC-2	Media Specialist Office	0	0	0	0	0	0	varies	0		
M-MC-3	Workroom/Storage	0	0	0	0	0	0	varies	0	See Note 5.	
M-MC-4	Technology Control Center	0	0	0	0	0	0	varies	0		
M-MC-5	MS Distance Learning Lab	0	0	0	0	0	0	varies	0		
M-MC-6	A/V Storage	0	0	0	0	0	0	varies	0	See Note 6.	
M-MC-7	Conference Room	0	0	0	0	0	0	varies	0		
M-MC-8	Multimedia Production Room	0	0	0	0	0	0	varies	0	See Note 7.	
<b>Media Center Total</b>			<b>0</b>		<b>0</b>		<b>0</b>		<b>0</b>		

- NOTE 1: The size of the reading room/circulation space is equal to 10% of the student capacity multiplied by 30 SF per student  
NOTE 2: Student capacity determines SF allowed. 350-400: 150 SF; 401-550: 200 SF; 551-700: 250 SF  
NOTE 3: Student capacity determines SF allowed. 350-400: 100 SF; 401-550: 150 SF; 551-700: 200 SF  
NOTE 4: The size of the reading room/circulation space is equal to 10% of the student capacity multiplied by 35 SF per student  
NOTE 5: Student capacity determines SF allowed. 350-450: 150 SF; 451-600: 200 SF; 601-750: 250 SF  
NOTE 6: Student capacity determines SF allowed. 350-450: 150 SF; 451-600: 200 SF; 601-750: 250 SF  
NOTE 7: Student capacity determines SF allowed. 350-450: 300 SF; 451-600: 400 SF; 601-750: 500 SF

**VISUAL ARTS**

**C-VA**

**400 Student POR**

Space		Qty	SF	Area	Variance
E-VA-1	Elementary Art Room	0	1,200	0	0
E-VA-2	Kiln/Ceramic Storage	0	200	0	0
E-VA-3	Art Material Storage	0	125	0	0
M-VA-1	Middle School Art Room	1	900	900	(900)
M-VA-2	Kiln/Ceramic Storage	1	100	100	(100)
M-VA-3	Art Material Storage	1	125	125	(125)
<b>Visual Arts Total</b>				<b>1,125</b>	<b>(1,125)</b>

WORKSHEET		New SF			Existing SF			TOTAL SF			
Space		Qty	SF	Area	Qty	SF	Area	Qty	SF	Area	
E-VA-1	Elementary Art Room	0	0	0	0	0	0	0	varies	0	See Note 1.
E-VA-2	Kiln/Ceramic Storage	0	0	0	0	0	0	0	varies	0	See Note 2.
E-VA-3	Art Material Storage	0	0	0	0	0	0	0	varies	0	See Note 3.
M-VA-1	Middle School Art Room	0	0	0	0	0	0	0	varies	0	See Note 1.
M-VA-2	Kiln/Ceramic Storage	0	0	0	0	0	0	0	varies	0	See Note 2.
M-VA-3	Art Material Storage	0	0	0	0	0	0	0	varies	0	See Note 4.
<b>Visual Arts Total</b>				<b>0</b>		<b>0</b>		<b>0</b>		<b>0</b>	

NOTE 1: Total student capacity determines SF allowed. 350-800: 1200 SF; 801 and larger: 1400 SF

NOTE 2: Student capacity determines SF allowed. 350-450: 100 SF; 451 and larger: 200 SF

NOTE 3: Student capacity determines SF allowed. 350-400: 100 SF; 401-550: 125 SF; 551 and larger: 150 SF

NOTE 4: Student capacity determines SF allowed. 350-450: 100 SF; 451-600: 150 SF; 601 and larger: 200 SF

CHAPTER 2: BRACKETING

400 Student POR				Variance
Space	Qty	SF	Area	
E-MU-1 Music Room	1	1,200	1,200	(1,200)
M-MU-1 Instrumental Room	0	1,400	0	0
M-MU-2 Vocal Room	0	1,200	0	0
M-MU-3 Music Library	1	200	200	(200)
<b>Music Total</b>			<b>1,400</b>	<b>(1,400)</b>

Space	New SF			Existing SF			TOTAL SF		
	Qty	SF	Area	Qty	SF	Area	Qty	SF	Area
E-MU-1 Music Room	0	0	0	0	0	0	0	varies	0
M-MU-1 Instrumental Room - note 1	0	0	0	0	0	0	0	varies	0
M-MU-2 Vocal Room	0	0	0	0	0	0	0	varies	0
M-MU-3 Music Library	0	0	0	0	0	0	0	varies	0
<b>Music Total</b>			<b>0</b>			<b>0</b>			<b>0</b>

NOTE 1: Student capacity determines SF allowed. 350-450: 1400 SF; 451-650: 1500 SF; 651 and larger: 1600 SF

Cincinnati Public Schools, Silverton School  
**PHYSICAL EDUCATION SPACES**  
**C-PE**

CHAPTER 2: BRACKETING

**400 Student POR**

Space		Qty	SF	Area	Variance
E-PE-1	Gymnasium	0	0	0	0
E-PE-2	P. E. Workroom/Storage	1	300	300	(300)
M-PE-1	Gymnasium	1	6,000	6,000	(6,000)
M-PE-2	P.E./Athletic Office	1	75	75	(75)
M-PE-3	Staff Shower	1	75	75	(75)
M-PE-4	Student Locker Room	2	270	540	(540)
M-PE-5	Student Restroom/Shower	2	130	260	(260)
M-PE-6	Physical Education Storage	0	500	0	0
<b>Physical Education Total</b>				<b>7,250</b>	<b>(7,250)</b>

WORKSHEET		New SF			Existing SF			TOTAL SF			
Space		Qty	SF	Area	Qty	SF	Area	Qty	SF	Area	
E-PE-1	Gymnasium	0	0	0	0	0	0	0	varies	0	See Note 1.
E-PE-2	P. E. Workroom/Storage	0	0	0	0	0	0	0	varies	0	See Note 2.
M-PE-1	Gymnasium	0	0	0	0	0	0	0	varies	0	See Note 3.
M-PE-2	P.E./Athletic Office	0	0	0	0	0	0	0	varies	0	
M-PE-3	Staff Shower	0	0	0	0	0	0	0	varies	0	
M-PE-4	Student Locker Room	0	0	0	0	0	0	0	varies	0	See Note 4.
M-PE-5	Student Restroom/Shower	0	0	0	0	0	0	0	varies	0	
M-PE-6	Physical Education Storage	0	0	0	0	0	0	0	varies	0	See Note 5.
<b>Physical Education Total</b>				<b>0</b>		<b>0</b>		<b>0</b>		<b>0</b>	

NOTE 1: Student capacity determines SF allowed. 350-400: 3500 SF; 401-550: 4500 SF; 551-700: 5000 SF

NOTE 2: Student capacity determines SF allowed. 350-400: 200 SF; 401-550: 300 SF; 551-700: 400 SF

NOTE 3: Student capacity determines SF allowed. 350-450: 7000 SF; 451-600: 8000 SF; 601-750: 8500 SF

NOTE 4: Student capacity determines SF allowed. 350-450: 550 SF; 451-600: 600 SF; 601-750: 650 SF

NOTE 5: Student capacity determines SF allowed. 350-450: 200 SF; 451-600: 400 SF; 601-750: 500 SF

CHAPTER 2: BRACKETING

**400 Student POR**

Space		Qty	SF	Area	Variance
E/M-SD-1	Student Dining	1	3,000	3,000	(3000)
E/M-SD-2	Stage	1	900	900	(900)
E/M-SD-3	Staff Dining	1	300	300	(300)
E/M-SD-4	Table Storage	1	250	250	(250)
<b>Student Dining Total</b>				<b>4,450</b>	<b>(4450)</b>

WORKSHEET		New SF			Existing SF			TOTAL SF			
Space		Qty	SF	Area	Qty	SF	Area	Qty	SF	Area	
E/M-SD-1	Student Dining	0	0	0	0	0	0	0	varies	0	See Note 1.
E/M-SD-2	Stage	0	0	0	0	0	0	0	varies	0	See Note 2.
E/M-SD-3	Staff Dining	0	0	0	0	0	0	0	varies	0	See Note 3.
E/M-SD-4	Table Storage	0	0	0	0	0	0	0	varies	0	See Note 4.
<b>Student Dining Total</b>				<b>0</b>		<b>0</b>		<b>0</b>		<b>0</b>	

**NOTE 1:** The size of the student dining space is equal to one-third of the student capacity multiplied by 20 SF per student or 3000 SF, whichever is greater.

**NOTE 2:** The size of the stage equals student capacity multiplied by 2.0 SF.( 900 SF minimum)

**NOTE 3:** Total student capacity determines SF allowed. 350-500: 250 SF; 501-700: 400 SF; 701-900: 550 SF; 901 and larger: 700 SF

**NOTE 4:** Total student capacity determines SF allowed. 350-500: 300 SF; 501-700: 400 SF; 701-900: 500 SF; 901 and larger: 600 SF

**400 Student POR**

Space		Qty	SF	Area	Variance
E/M-FS-0	Warming Kitchen	0	800	0	0
E/M-FS-1	Kitchen (total)	1		1,544	(1544)
E/M-FS-1a	Preparation Area	1	504		
E/M-FS-1b	Serving Area	1	476		
E/M-FS-1c	Dry Food Storage	1	154		
E/M-FS-1d	Cooler/Freezer	1	140		
E/M-FS-1e	Ware Washing	1	126		
E/M-FS-2	Dietician Office	1	75	75	(75)
E/M-FS-3	Restroom	1	50	50	(50)
E/M-FS-4	Locker Room	1	125	125	(125)
<b>Food Service Total</b>				<b>1,794</b>	<b>(1794)</b>

Space	New SF			Existing SF			TOTAL SF			
	Qty	SF	Area	Qty	SF	Area	Qty	SF	Area	
E/M-FS-0	Warming Kitchen	0	0	0	0	0	0	varies	0	See Notes 7 and 8.
E/M-FS-1	Kitchen (total)	0	0				0	varies	0	See Notes 1 and 8.
E/M-FS-1a	Preparation Area		0		0			varies		See Note 2.
E/M-FS-1b	Serving Area		0		0			varies		See Note 3.
E/M-FS-1c	Dry Food Storage		0		0			varies		See Note 4.
E/M-FS-1d	Cooler/Freezer		0		0			varies		See Note 5.
E/M-FS-1e	Ware Washing		0		0			varies		See Note 6.
E/M-FS-2	Dietician Office	0	0	0	0	0	0	varies	0	
E/M-FS-3	Restroom	0	0	0	0	0	0	varies	0	
E/M-FS-4	Locker Room	0	0	0	0	0	0	varies	0	
<b>Food Service Total</b>			<b>0</b>	<b>0</b>	<b>0</b>	<b>0</b>	<b>0</b>		<b>0</b>	

NOTE 1: The size of the kitchen is equal to the sum of preparation area, serving area, dry food storage area, cooler/freezer area, and ware washing area.

NOTE 2: The size of the preparation area is equal to the total student capacity multiplied by 3.5 SF per student multiplied by 36%.

NOTE 3: The size of the serving area is equal to the total student capacity multiplied by 3.5 SF per student multiplied by 34%.

NOTE 4: The size of the dry food storage area is equal to the total student capacity multiplied by 3.5 SF per student multiplied by 11%.

NOTE 5: The size of the cooler/freezer area is equal to the total student capacity multiplied by 3.5 SF per student multiplied by 10%.

NOTE 6: The size of the ware washing area is equal to the total student capacity multiplied by 3.5 SF per student multiplied by 9%.

**NOTE 7: The size of the warming kitchen is equal to student capacity multiplied by 2.0 SF per student.**

**NOTE 8: Only one of the two kitchens are to be used - either E/M-FS-0 OR E/M-FS-1 - not both.**

CHAPTER 2: BRACKETING

**400 Student POR**

Space		Qty	SF	Area	Variance
E/M-CU-1	Workroom	1	300	300	(300)
E/M-CU-2	Custodial Office	1	100	100	(100)
<b>Custodial Total</b>				<b>400</b>	<b>(400)</b>

WORKSHEET		New SF			Existing SF			TOTAL SF			
Space		Qty	SF	Area	Qty	SF	Area	Qty	SF	Area	
E/M-CU-1	Workroom	0	300	0	0	0	0	0	varies	0	See Note 1. <b>NOTE A</b>
E/M-CU-2	Custodial Office	0	93	0	0	0	0	0	varies	0	
<b>Custodial Total</b>				<b>0</b>			<b>0</b>			<b>0</b>	

NOTE 1: Total student capacity determines SF allowed. 350-450: 200 SF; 451 and larger: 400 SF

NOTE A: EM-CU-1 added with EM-BS-8

**400 Student POR**

Space		Qty	SF	Area		Variance
E/M-BS-1	Large Group Restrooms		1,663	1,663	See Note 1.	(1663)
E/M-BS-2	Custodial Closet	2	30	30		(30)
E/M-BS-3	Electrical Closet	2	30	60		(60)
E/M-BS-4	Technology Closet	2	30	60		(60)
E/M-BS-5	Corridors		4,751	4,751	See Note 2.	(4751)
E/M-BS-6	Mechanical Rooms/Decks		3,278	3,278	See Note 3.	(3278)
E/M-BS-7	Storage Area	1	200	200	See Note 4.	(200)
E/M-BS-8	Central Storage Area	1	325	325	See Note 5.	(325)
E/M-BS-9	Loading/Receiving Area	1	120	120		(120)
E/M-BS-10	Outdoor Storage	1	150	150		(150)
<b>Building Services Total</b>				<b>10,637</b>		<b>(10637)</b>

WORKSHEET		New SF			Existing SF			TOTAL SF			
Space		Qty	SF	Area	Qty	SF	Area	Qty	SF	Area	
E/M-BS-1	Large Group Restrooms	-	0	0	-	0	0	-	varies	0	See Note 1.
E/M-BS-2	Custodial Closet	0	0	0	0	0	0	0	varies	0	
E/M-BS-3	Electrical Closet	0	0	0	0	0	0	0	varies	0	
E/M-BS-4	Technology Closet	0	0	0	0	0	0	0	varies	0	
E/M-BS-5	Corridors	-	0	0	-	0	0	-	varies	0	See Note 2.
	<i>Vertical Circulation</i>	-	0	0	-	0	0	-	varies	0	See Note 6.
E/M-BS-6	Mechanical/Electrical Space/Decks	-	0	0	-	0	0	-	varies	0	See Note 3.
	% of E/M-BS-6 on Mezzanine	-	0%	]	-	0%	0	-	varies	0	See Note 7&8
E/M-BS-7	Storage Area	0	0	0	0	0	0	0	varies	0	See Note 4.
E/M-BS-8	Central Storage Area	0	0	0	0	0	0	0	varies	0	See Note 5.
E/M-BS-9	Loading/Receiving Area	0	0	0	0	0	0	0	varies	0	
E/M-BS-10	Outdoor Storage	0	0	0	0	0	0	0	varies	0	
<b>Building Services Total</b>				<b>0</b>			<b>0</b>			<b>0</b>	

NOTE 1: The total size of large group restrooms is equal to the sum of the program areas, excluding building services, multiplied by 3.5%.

NOTE 2: The total size of the corridors is equal to the sum of the program areas, excluding building services, multiplied by 20%.

NOTE 3: The total size of the mechanical/electrical space/decks is equal to the sum of the program areas, excluding building services, multiplied by 6.9%.

NOTE 4: Total student capacity determines SF allowed. 350-450: 150 SF; 451-800: 200 SF; 801 and larger: 250 SF

NOTE 5: Total student capacity determines SF allowed. 350-450: 250 SF; 451-800: 300 SF; 801-1200: 350 SF; 1201 and larger: 400 SF

NOTE 6: Vertical Circulation refers only to the following: Stairways/stairtowers, monumental stairs, elevators and elevator equipment room.

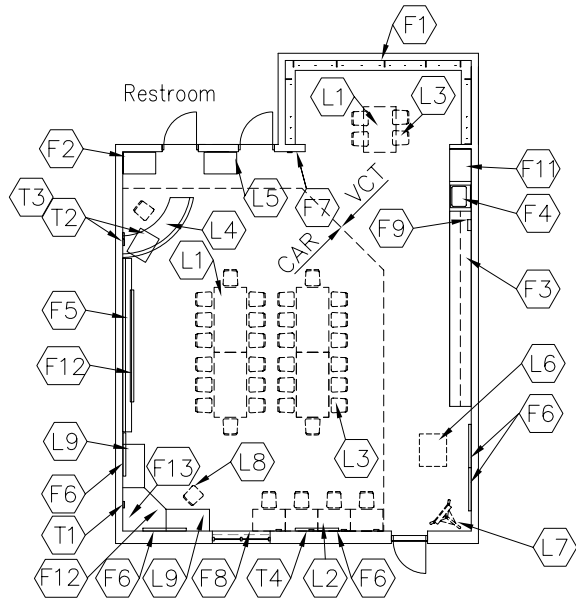
The total size of the Vertical Circulation is equal to the sum of the program areas, excluding building services, multiplied by 2.5%.

**NOTE 7: Enter the proportion (%) of total mechanical space that is to be located on mezzanine(s).**

**For calculation, (100-X)% of total mechanical/electrical space is considered ground floor and (X)% mezzanine deck. A roof penthouse is not considered mezzanine space.**

NOTE 8: For calculation of adjusted Mechanical Mezzanine space, 50% of Mezzanine can be utilized elsewhere.

**NOTE A: EM-CU-1 added with EM-BS-8**



**PROGRAM ACTIVITIES:**

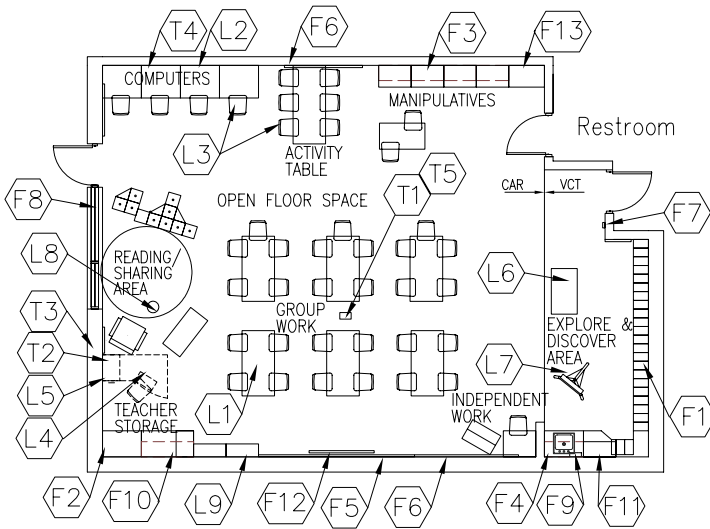
- Kindergarten instruction through active exploration
- Children practice with tangible articles and are encouraged to develop learning skills, creativity, and imagination.
- Activities include, but are not limited to: group discussions, demonstrations, music activities, listening skills, gross motor skills, art and science projects, and small group activities.

**SPATIAL RELATIONSHIPS:**

- Near other pre-k/kindergarten classrooms
- Near teacher prep area/workroom
- Direct access to outdoor playground
- Near vehicle drop-off/pick-up drive
- Adjacent to pre-k/kindergarten restroom

**ENVIRONMENTAL CONSIDERATIONS:**

- Uniform lighting
- Natural light opening equal to minimum 5% of floor area, with an operable vent
- Environmental sound control – wall minimum STC 50 ceiling minimum CAC 35, NRC 0.65
- Resilient and stain-resistant floor covering
- Ergonomically appropriate furniture and equipment heights



**CAPACITY:** 25 students  
**SIZE:** 1,200 SF  
**ANCILLARY SPACES:** Pre-K/Kindergarten Restroom  
 E-AC-2

**NOTES:**

1. Loose furnishings shown represent one of many possible configurations based on educational program.
2. Depending upon the educational program of the district, a tall wardrobe may be located in this classroom or could be placed in a teacher prep area/workroom.
3. Second exit from space to meet code need not open to exterior.

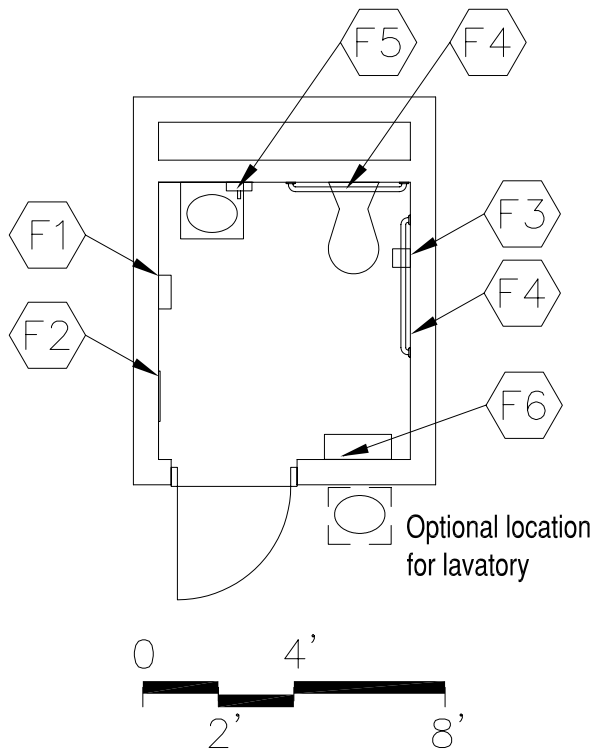
**PRE-K/KINDERGARTEN CLASSROOM  
E-AC-1**

CHAPTER 4: ELEMENTARY SCHOOL

<u>FINISHES<sup>1</sup>:</u>	Spec. Ref.#	<u>FEATURES<sup>1</sup>:</u>	Spec. Ref.#
<u>Flooring:</u>		<u>Fixed Items:</u>	
Combination carpet	<b>096816</b>	F1 Open casework - student coats and personal items, with wall cabinets above	<b>123550</b>
with vinyl composition tile	<b>096500</b>	F2 3' of tall wardrobe w/file drawers, optional	<b>123550</b>
Optional: All vinyl composition tile, linoleum, VET, VCTT, or sheet vinyl	<b>096516</b>	F3 15'-18' of base & wall cabinets	<b>123550</b>
<u>Base:</u>		F4 3' sink base cabinet	<b>123550</b>
Resilient base	<b>096500</b>	F5 12'-16' of chalk/marker board	<b>101100</b>
<u>Ceiling:</u>		F6 16'-20' of tack board or tackable wall surface or combination	<b>101100</b>
Suspended, acoustical	<b>095113</b>	F7 Pencil sharpener support	<b>062000</b>
<u>Walls:</u>		F8 Window with integral blinds	<b>085116</b>
Painted concrete masonry units	<b>042200/099100</b>	F9 Towel dispenser (optional)	<b>102813</b>
<u>LOOSE FURNISHINGS:</u>		F10 36"- 42" high storage cabinet	<b>123550</b>
L1 Student desks/tables		F11 3' of tall cabinets (could have tote trays, optional)	<b>123550</b>
L2 Computer workstation furniture (fixed or mobile)		F12 Projection screen (optional)	<b>115213</b>
L3 Student chairs		F13 Technology support casework (could be mobile)	<b>123550</b>
L4 Teacher workstation/computer support and chair (fixed or mobile)		<b><u>Fire Suppression:</u></b>	
L5 File cabinet		Fire <b>suppression</b> system	<b>211000</b>
L6 Sand/water table		<b><u>Plumbing:</u></b>	
L7 Children's painting easel		Sink with drinking fountain	<b>224000</b>
L8 Teacher reading chair or stool		Plumbing connections	<b>224000/221113/221116/221119</b>
L9 8'-10' of low bookcases (fixed or mobile)		<b><u>HVAC:</u></b>	
Wastebasket		Supply/return air system	Div. 23
Pencil sharpener		Independent temperature control	<b>230923</b>
<u>Miscellaneous:</u>		<b><u>Electrical:</u></b>	
N/A		Fluorescent lighting	<b>265100</b>
		Illumination level: See Table 8600-4	<b>262726</b>
		Multilevel switching	<b>262726</b>
		4 duplex receptacles	<b>262726</b>
		Double duplex receptacle adjacent to each data and video port	<b>262726</b>
		Emergency lighting	<b>265100</b>
		Means of egress lighting per code	<b>265100</b>
		<b><u>Communications:</u></b>	
		T1 1 video port	<b>271533/271543</b>
		T2 1 voice port and phone	<b>271513/273113</b>
		T3 1 data port near teacher workstation	<b>271513</b>
		T4 4 data ports (minimum) for student use	<b>271513</b>
		Central sound system	<b>275123</b>
		Clock	<b>275313</b>
		Sound reinforcement system	<b>275127</b>
		T5 Overhead projector	<b>274119</b>
		<b><u>Electronic Safety and Security:</u></b>	
		Life safety devices per code	<b>283111</b>

**NOTES:**

1. Finishes/Features: Refer to Chapter 9 for specification references.
2. Technology components may be placed in a separate small cabinet, or integrated in the other casework in the room.



**PROGRAM ACTIVITIES:**

- Personal and health needs for kindergarten students

**SPATIAL RELATIONSHIPS:**

- Adjacent to and only accessible from Pre-K/ Kindergarten Classroom

**ENVIRONMENTAL CONSIDERATIONS:**

- Uniform lighting
- Environmental sound control -  
wall minimum STC 53  
ceiling minimum CAC 35, NRC 0.40
- Moisture- and stain-resistant finishes

CAPACITY: 1 person  
 SIZE: 40 SF  
 ANCILLARY SPACES: Pre-K/Kindergarten Classroom  
 E-AC-1

NOTES:

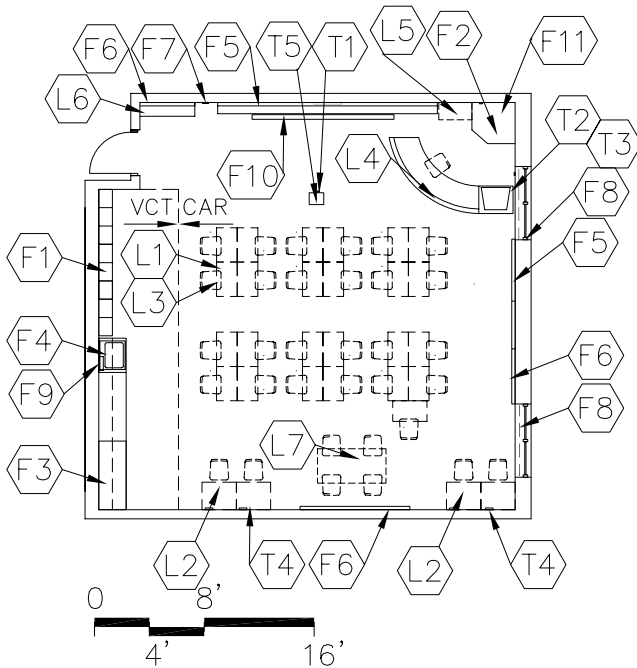
**PRE-K/KINDERGARTEN RESTROOM  
E-AC-2**

CHAPTER 4: ELEMENTARY SCHOOL

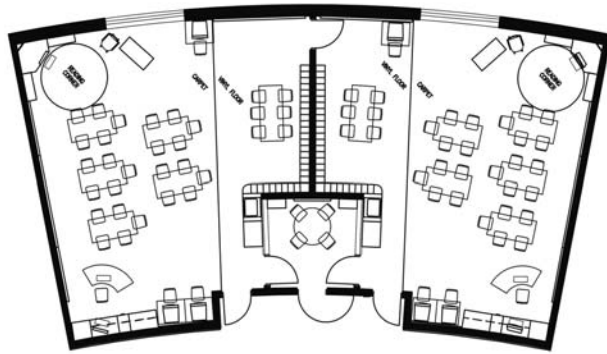
<u>FINISHES<sup>1</sup>:</u>	Spec. Ref.#	<u>FEATURES<sup>1</sup>:</u>	Spec. Ref.#
<b>Flooring:</b>		<b><u>Fixed Items:</u></b>	
Linoleum, rubber, VET, or sheet vinyl	<b>096516</b>	F1 Towel dispenser	<b>102813</b>
Optional: ceramic mosaic tile, porcelain tile, <b>or resinous flooring</b>	<b>096500</b> <b>093000</b> <b>093000</b> <b>096723</b>	F2 24" x 60" mirror	<b>102813</b>
		F3 Toilet tissue holder	<b>102813</b>
		F4 36" and 42" grab bar	<b>102813</b>
		F5 Soap dispenser	<b>102813</b>
		F6 Changing station (optional)	<b>102813</b>
<b>Base:</b>		<b><u>Fire Suppression:</u></b>	
Resilient base	<b>096500</b>	Fire <b>suppression</b> system	<b>211000</b>
Optional: ceramic mosaic tile, porcelain tile, <b>or resinous flooring</b>	<b>093000</b> <b>093000</b> <b>096723</b>		
<b>Ceiling:</b>		<b><u>Plumbing:</u></b>	
Suspended, acoustical	<b>095113</b>	Wall-mounted water closet	<b>224000</b>
		Wall-mounted lavatory	<b>224000</b>
		Plumbing connections	<b>224000/221113/221116/221119</b>
<b>Walls:</b>		<b><u>HVAC:</u></b>	
Painted concrete masonry units	<b>042200/099100</b>	Exhaust air system	Div. <b>23</b>
		Supplemental heat as required	Div. <b>23</b>
<b><u>LOOSE FURNISHINGS:</u></b>		<b><u>Electrical:</u></b>	
Wastebasket		Single level switching	<b>262726</b>
		Fluorescent lighting	<b>265100</b>
		Illumination level: See Table <b>8600-4</b>	
		<b><u>Communications:</u></b>	
		Central sound system	<b>275123</b>
		<b><u>Electronic Safety and Security:</u></b>	
		Life safety devices per code	<b>283111</b>
		<b><u>Miscellaneous:</u></b>	
		N/A	

**NOTES:**

1. Finishes/Features: Refer to Chapter 9 for specification references.



small group room  
or tutor room -  
part of classroom tolerance



classroom

classroom

CAPACITY:  
SIZE:

25 students  
900 SF

**PROGRAM ACTIVITIES:**

- Developmental experiences, technical skill building, and hands-on activities
- Activities include, but are not limited to: group discussions, demonstrations, music activities, listening skills, presentations, art and science projects, and small group activities.

**SPATIAL RELATIONSHIPS:**

- Near other elementary classrooms
- Near large group restrooms
- Near teacher prep area/workroom
- Access to outdoor playground

**ENVIRONMENTAL CONSIDERATIONS:**

- Uniform lighting
- Natural light opening equal to minimum 5% of floor area, with an operable vent
- Environmental sound control – wall minimum STC 50 ceiling minimum CAC 35, NRC 0.65
- Resilient and stain-resistant floor covering

**NOTES:**

1. Loose furnishings shown represent one of many possible arrangements.
2. Depending upon the educational program of the district, a tall wardrobe may be located in this classroom or could be placed in a teacher prep area/workroom.

**ELEMENTARY CLASSROOM  
E-AC-3**

<u>FINISHES<sup>1</sup>:</u>	Spec. Ref.#	<u>FEATURES<sup>1</sup>:</u>	Spec. Ref.#
<u>Flooring:</u>		<u>Fixed Items:</u>	
Combination carpet with vinyl composition tile	<b>096816</b> <b>096500</b>	F1 Open casework – coats and personal storage with wall cabinets above	<b>123550</b>
Optional: All vinyl composition tile, linoleum, VET, VCTT, or sheet vinyl	<b>096516</b>	F2 3' of tall wardrobe w/file drawers	<b>123550</b>
		F3 8'-9' of base & wall cabinets	<b>123550</b>
<u>Base:</u>		F4 3' sink base cabinet	<b>123550</b>
Resilient base	<b>096500</b>	F5 12'-16' of chalk/marker board	<b>101100</b>
		F6 20' of tack board	<b>101100</b>
<u>Ceiling:</u>		or tackable wall surface or combination	
Suspended, acoustical	<b>095113</b>	F7 Pencil sharpener support	<b>062000</b>
		F8 Windows with integral blinds	<b>085116</b>
<u>Walls:</u>		F9 Towel dispenser (optional)	<b>102813</b>
Painted concrete masonry units	<b>042200/099100</b>	F10 Projection screen (optional)	<b>115213</b>
		F11 Technology support casework	<b>123550</b>
<u>LOOSE FURNISHINGS:</u>		<b><u>Fire Suppression:</u></b>	
L1 Student desks/tables		Fire <b>suppression</b> system	<b>211000</b>
L2 Computer workstation furniture		<u>Plumbing:</u>	
L3 Student chairs		Sink with drinking fountain	<b>224000</b>
L4 Teacher desk or workstation/computer support and chair		Plumbing connections	<b>224000/221113/221116/221119</b>
L5 File cabinet		<u>HVAC:</u>	
L6 8'-10' of low bookcases (fixed or mobile)		Supply/return air system	<b>Div. 23</b>
L7 Reading table		Independent temperature control	<b>230923</b>
Wastebasket		<u>Electrical:</u>	
Pencil sharpener		Fluorescent lighting	<b>265100</b>
<u>SCIENCE</u>		Illumination level: See Table <b>8600-4</b>	
Optional items for science teaching center (in one of elementary classrooms):		Multilevel switching	<b>262726</b>
• Mobile demonstration unit with portable water supply and sink		4 duplex receptacles	<b>262726</b>
• (2)-(3) mobile storage cabinets for science equipment and materials		Double duplex receptacle adjacent to each data and video port	<b>262726</b>
		<b><u>Communications:</u></b>	
<u>Miscellaneous:</u>		T1 1 video port	<b>271533/271543</b>
M1 Operable partitions are optional between classrooms with tackboard/ markerboard surface	<b>102226</b>	T2 1 voice port and phone	<b>271513/273113</b>
		T3 1 data port	
		near teacher workstation	<b>271513</b>
		T4 4 data ports (minimum) for student use	<b>271513</b>
		Central sound system	<b>275123</b>
		Clock	<b>275313</b>
		Sound reinforcement system	<b>275127</b>
		T5 Overhead projector	<b>274119</b>
		<b><u>Electronic Safety and Security:</u></b>	
		Life safety devices per code	<b>283111</b>

**NOTES:**

1. Finishes/Features: Refer to Chapter 9 for specification references.
2. Option for Features (F1): lockers in classroom or corridor for grades 4 and 5 only.
3. Technology components may be placed in a separate small cabinet, or integrated in the other casework in the room.

**Sign In Sheet**

Project: Silverton Paideia  
Planning Meetings  
GBBN Project No: 11677.03

SPT Meeting - 05/06/08	SPT MEETING - 5/20/08	SPT PDR MEETING - 6/25/08		Name	City of Silverton CPS Org	Email
				Mark Wendling	City of Silverton	mwendling@cityofsilverton.com
				ROBIN BRANDON	CPS	rbrandon@cps-k12.org
✓	✓	✓		Kimberley Dawson	Silverton Teacher (IPP)	dawsonk@cpsboe.k12.oh.us
✓	✓	✓		Anthony Williams	Silverton	william@cpsboe.k12.oh.us
✓	✓	✓	✓	Denise White	Silverton Teacher	white.de@cpsboe.k12.oh.us
✓				Angela Daugherty	Silverton parent	angela.daugherty@fuse.net
✓	✓	✓		Tomasine Dendy	Principal	dendytd@cpsboe.k12.oh.us
✓				Lisa Long	Carthage Parent	llonga@fuse.net
✓				Thad Long	Carthage Parent	tlong@fuse.net
✓	✓			Mark Quarry	Silverton Council	MJQuarry@Fuse.net
✓				Judy Clark	Community	jclark@blueash.wom
✓	✓	✓	✓	Jace B. Glover	Silverton Council	jbglv02@aol.com
✓				PAUL WALDSMITH	Blue Ash YMCA	PWALDSMITH@cincinnatiymca.org
✓		✓		Mark Wendling	Silverton City Manager	mwendling@cityofsilverton.com
✓	✓			Amy Gryzbowski	Cincinnati School	agryzbowski@cincinnatiymca.org
✓				Jill Sunderman	2nd grade teacher	
✓	✓	✓	✓	Andrew Plogsted	GBBN Pres. Asst.	aplogsted@gbbn.com
✓	✓	✓	✓	pat chamberlain	Silverton teacher	patchamberlain@cpsboe.k12.oh.us
✓	✓	✓	✓	SEOTT VIDALBEK	GBBN	SVIDALBEK@GBBN.com
✓	✓	✓	✓	Jason Dennison	Cincinnati Museum Ctr.	jdennison@cincymuseum.org dennison@cps-k12.org
✓		✓	✓	LYNNE GIBB	Silverton VA teacher	gibbmar@cpsboe.k12.oh.us
✓	✓		✓	Audrey Gover	Silverton Teacher	goverau@cpsboe.k12.oh.us
✓	✓			Emily Holtrop	Cincy Nat Museum	emily.holtrop@cincyvet.org
✓	✓			Jennifer Choto	GBBN Architects	jchoto@gbbn.com
✓		✓		MARCENE KINNEY	GBBN	mkiney@gbbn.com
	✓	✓		DON NEWMAN	D.P. SILV. FIRE DEPT	dnewman@dpsjfd.org
		✓	✓	Dolline Kassar	Silverton teacher (ret)	
		✓	✓	Joanna Brown	Silverton resident/Planner	joanna.brown@hamilton-co.org
		✓	✓	Anne Pinales	Silverton teacher	pinales@cpsboe.k12.oh.us
		✓	✓	Tat Chambell	Tomazine Dendy (Principal)	dendytd@cpsboe.k12.oh.us